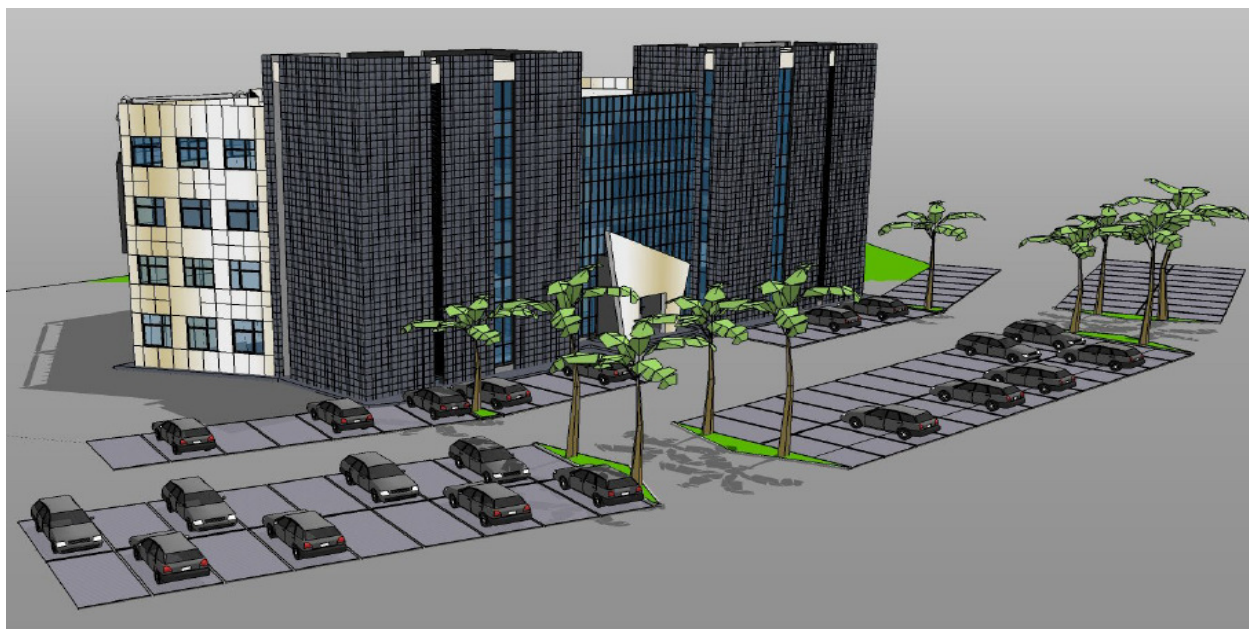




KnightFrank.com



### Elunda II, Addis Ababa Roundabout, Lusaka

#### Office space for lease

- New 4 storey office building
- Approximately 3,850m<sup>2</sup> of first class office space
- Parking for 83 vehicles on site
- Occupancy June 2010
- At the corner of Chikwa and Los Angeles Boulevard facing Barclays Head Office

**Rent:** On application

**Contact:**

T +260 211 250683

[kfzam@zm.knightfrank.com](mailto:kfzam@zm.knightfrank.com)

#### Important Notice

**1. Particulars:** These particulars are not an offer or contract, nor part of one. You should not rely on statements by Knight Frank Zambia in the particulars or by word of mouth or in writing ("information") as being factually accurate about the property, its condition or its value. Neither Knight Frank Zambia nor any joint agent has any authority to make any representations about the property, and accordingly any information given is entirely without responsibility on the part of the agents, seller(s) or lessor(s).

**2. Photos etc:** The photographs show only certain parts of the property as they appeared at the time they were taken. Areas, measurements and distances given are approximate only.

**3. Regulations etc:** Any reference to alterations to, or use of, any part of the property does not mean that any necessary planning, building regulations or other consent has been obtained. A buyer or lessee must find out by inspection or in other ways that these matters have been properly dealt with and that all information is correct.