

TO LET



KnightFrank.com

Harbour House, Bahrain Financial Harbour, Manama

- ◆ A high profile, 10 storey commercial property
- ◆ Lettable Area circa. 5,507 sq m / 59,275 sq ft combined Retail and Office space
- ◆ Office accommodation, third to seventh floors – 326 sq m to 662 sq m
- ◆ Retail space, ground, first and second floors – 306 sq m to 963 sq m
- ◆ Mix of semi-fitted and shell and core office accommodation
- ◆ 268 car parking spaces (Ratio 1:27 sq m)
- ◆ Exceptional harbour / sea views and sky bridge linking to the Harbour Mall
- ◆ Rental Rates on application

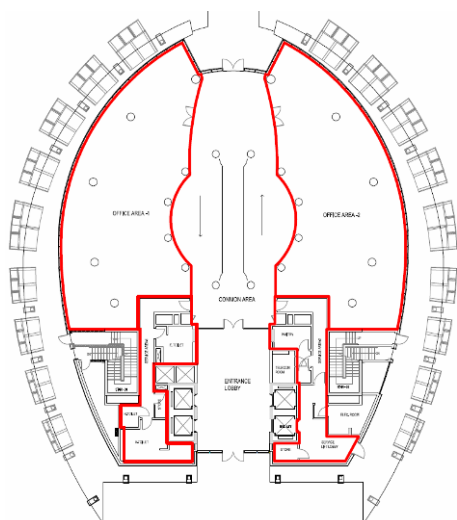


HARBOUR HOUSE, BFH, MANAMA, BAHRAIN

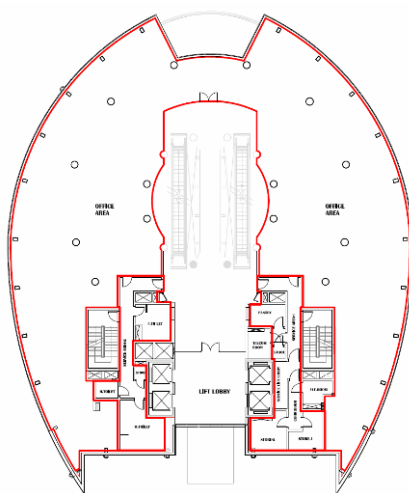


A modern letting prospect situated in a unique waterfront setting, connected to the internationally renowned Bahrain Financial Harbour, Grade A accommodation, flexible floor plates and unique terraces.

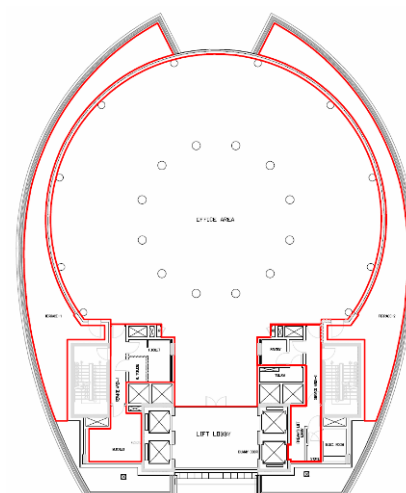
Ground - Retail



1st Floor - Retail

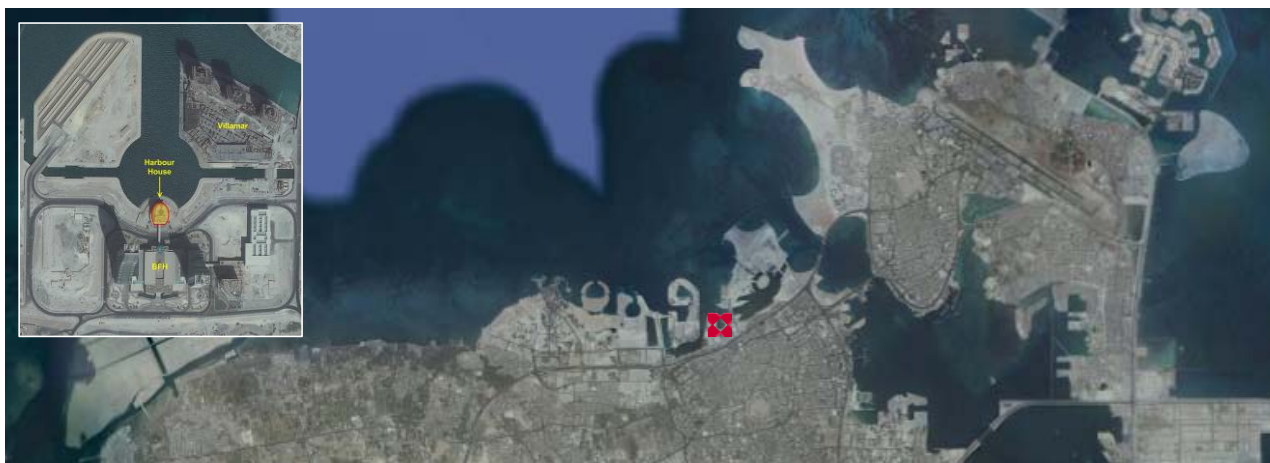


3rd - 7th Floors - Offices



Classification purposes only – Not to scale

Location Map



Important Notice

1. Particulars: These particulars are not an offer or contract, nor part of one. You should not rely on statements by Knight Frank Middle East W.L.L. in the particulars or by word of mouth or in writing ("information") as being factually accurate about the property, its condition or its value. Neither Knight Frank Middle East W.L.L. nor any joint agent has any authority to make any representations about the property, and accordingly any information given is entirely without responsibility on the part of the agents, seller(s) or lessor(s).
2. Photos etc: The photographs show only certain parts of the property as they appeared at the time they were taken. Areas, measurements and distances given are approximate only.
3. Regulations etc: Any reference to alterations to, or use of, any part of the property does not mean that any necessary planning, building regulations or other consent has been obtained. A buyer or lessee must find out by inspection or in other ways that these matters have been properly dealt with and that all information is correct.



Contact Jim Lynn

M (+973) 3638 1863

T (+973) 1710 7337

jim.lynn@me.knightfrank.com